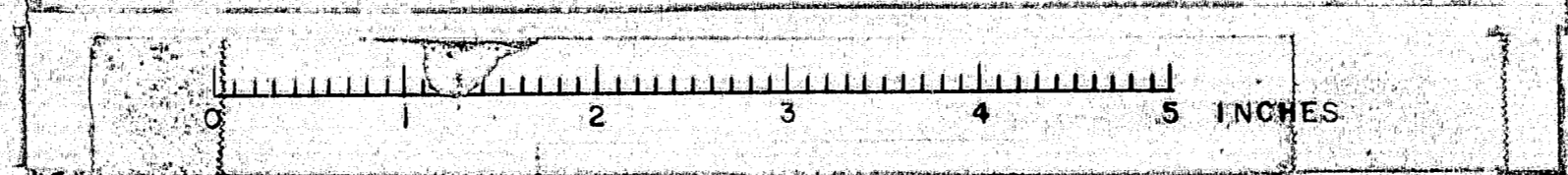


SHOP CONNECTIONS:
FIELD CONNECTIONS:
HOLES:
PAINT:

APPROX. AS NOTED 7-19-67

FRAMING PLAN			
PRINT ISSUE			
2	S.H.C.	9-8-64	<i>Barnes & Martin Rolling Mills Company</i> Brewer, Maine INTERSTATE 95 OVER KIRKLAND RD. OLD TOWN MAINE CUSTOMER REED & REED DESIGNER STATE HIGHWAY COMM. ORDER _____ DWG. B64-189-E1
3	CUST	9-8-64	
1	S.H.F.	9-8-62	
2	F.A.	7-29-64	
3	CUST	7-20-64	
1	SHOP	7-20-64	ORDER _____ DWG. B64-189-E1
2	F.A.	7-9-64	
1	REVISION	7-4-64 D.C.	
2	REVISION		
3	REVISION		



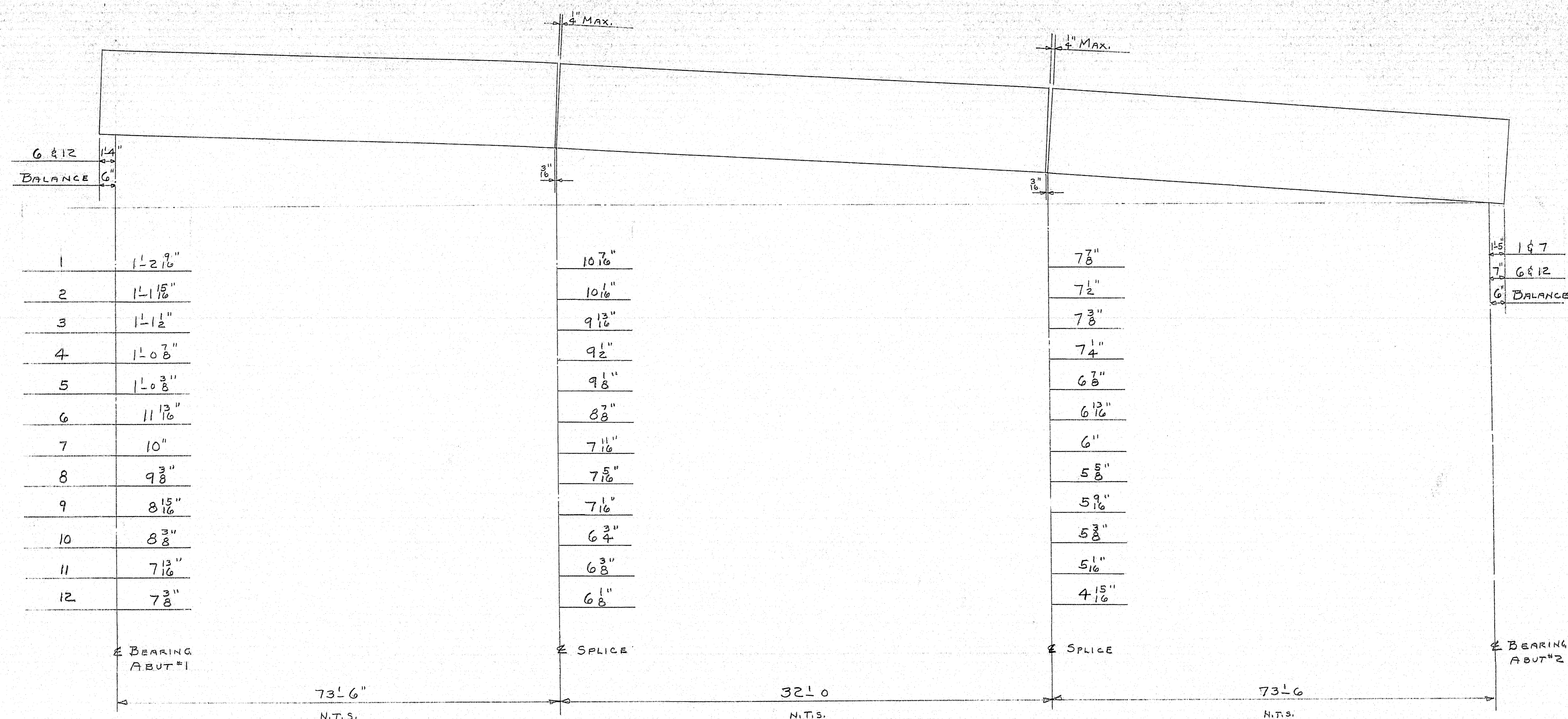
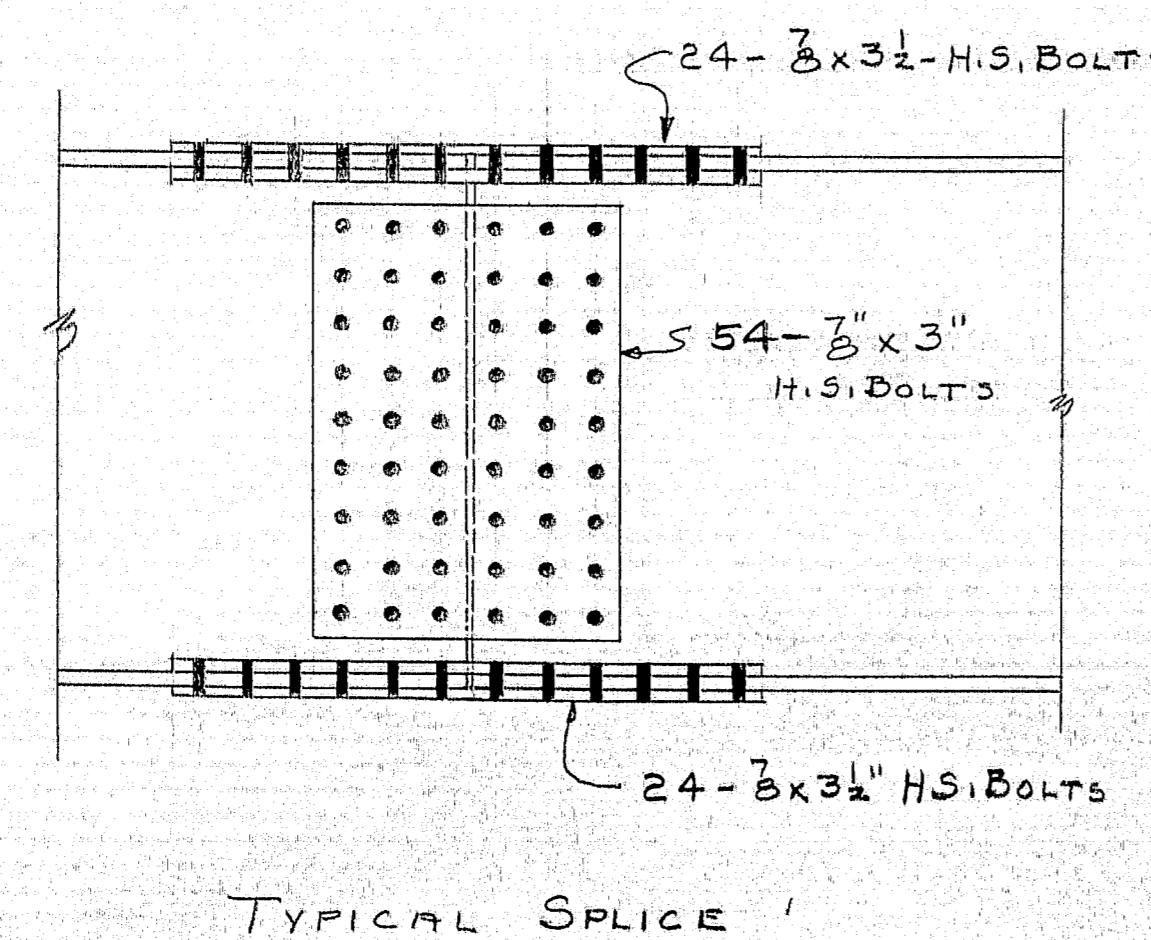


DIAGRAM OF STRINGER ELEVATIONS



NOTE:

ALL STRUCTURAL STEEL IS ASTM-A36
 SPLICE BOLTS ARE ASTM-A325-3" HEX. HEAVY HEAD BOLTS
 & HEAVY SEMI-FINISHED HEX NUT & ONE H.S. WASHER.

HOLES FOR SPLICE BOLTS ARE TO BE FREE FROM BURRS. THERE
 SHALL BE NO PAINT WITHIN 3" OF SUCH OPEN HOLES. SUB PUNCH
 OR DRILL HOLES TO 1/16" Ø, REAM ASSEMBLED (NO TEMPLATES)
 TO 1/8" Ø OR DRILL FROM SOLID.

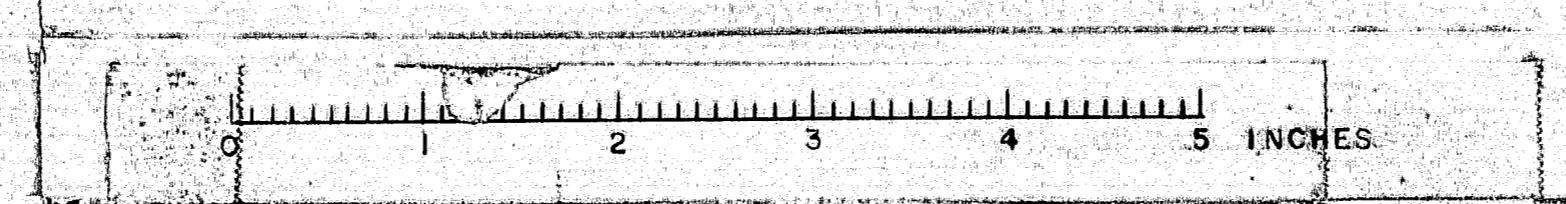
MATCHMARK ALL CONNECTING PARTS BEFORE DISASSEMBLING.

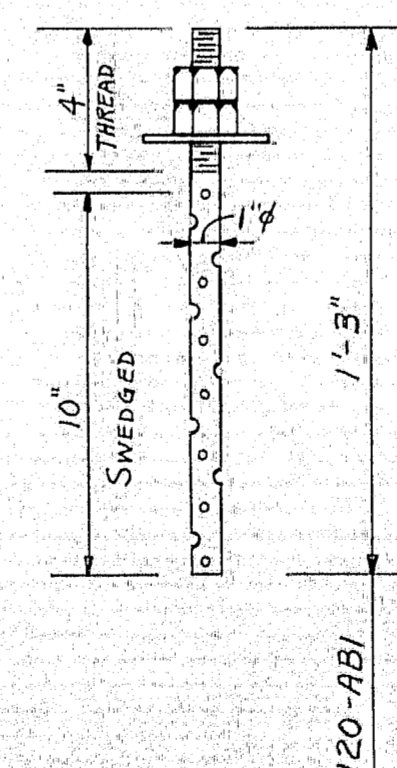
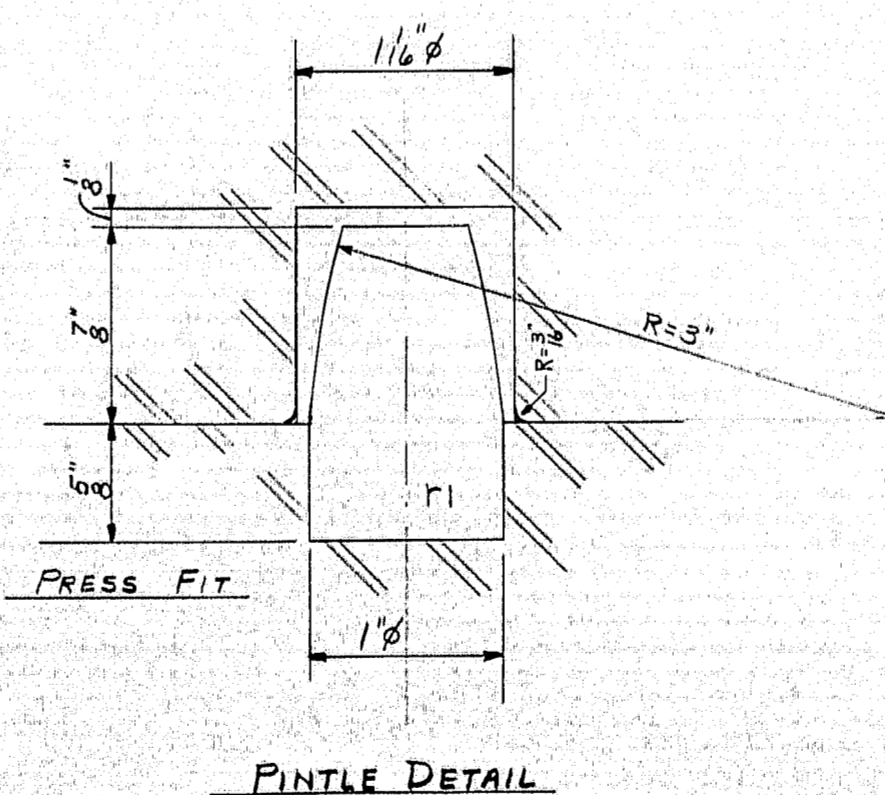
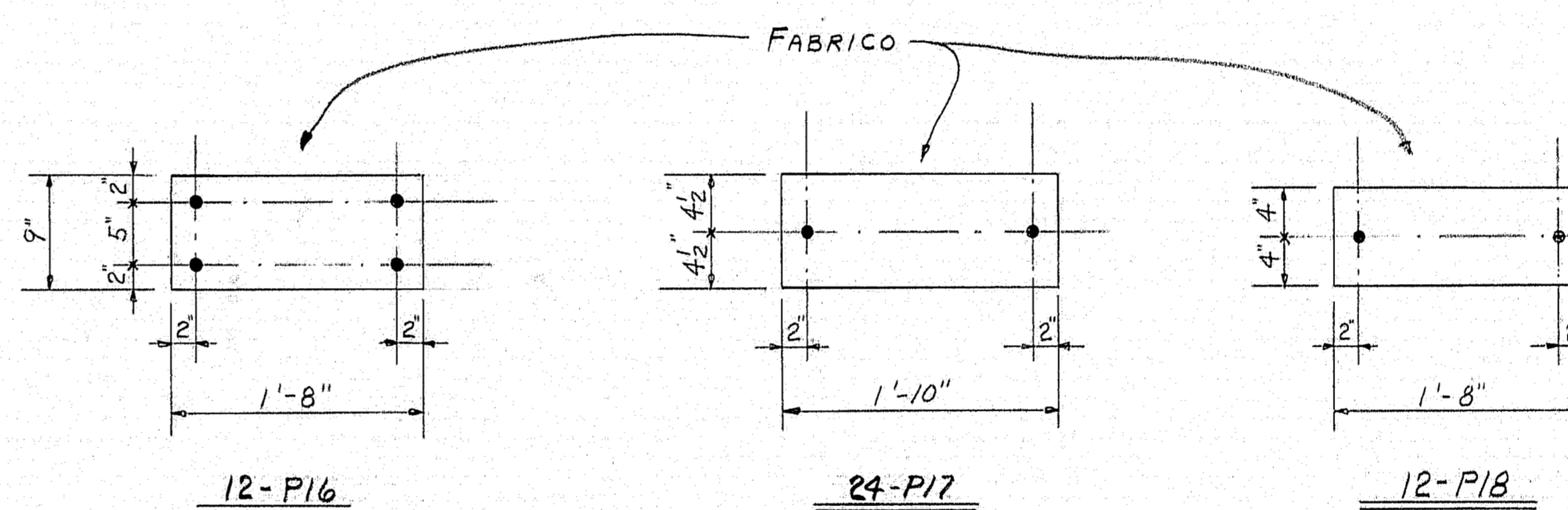
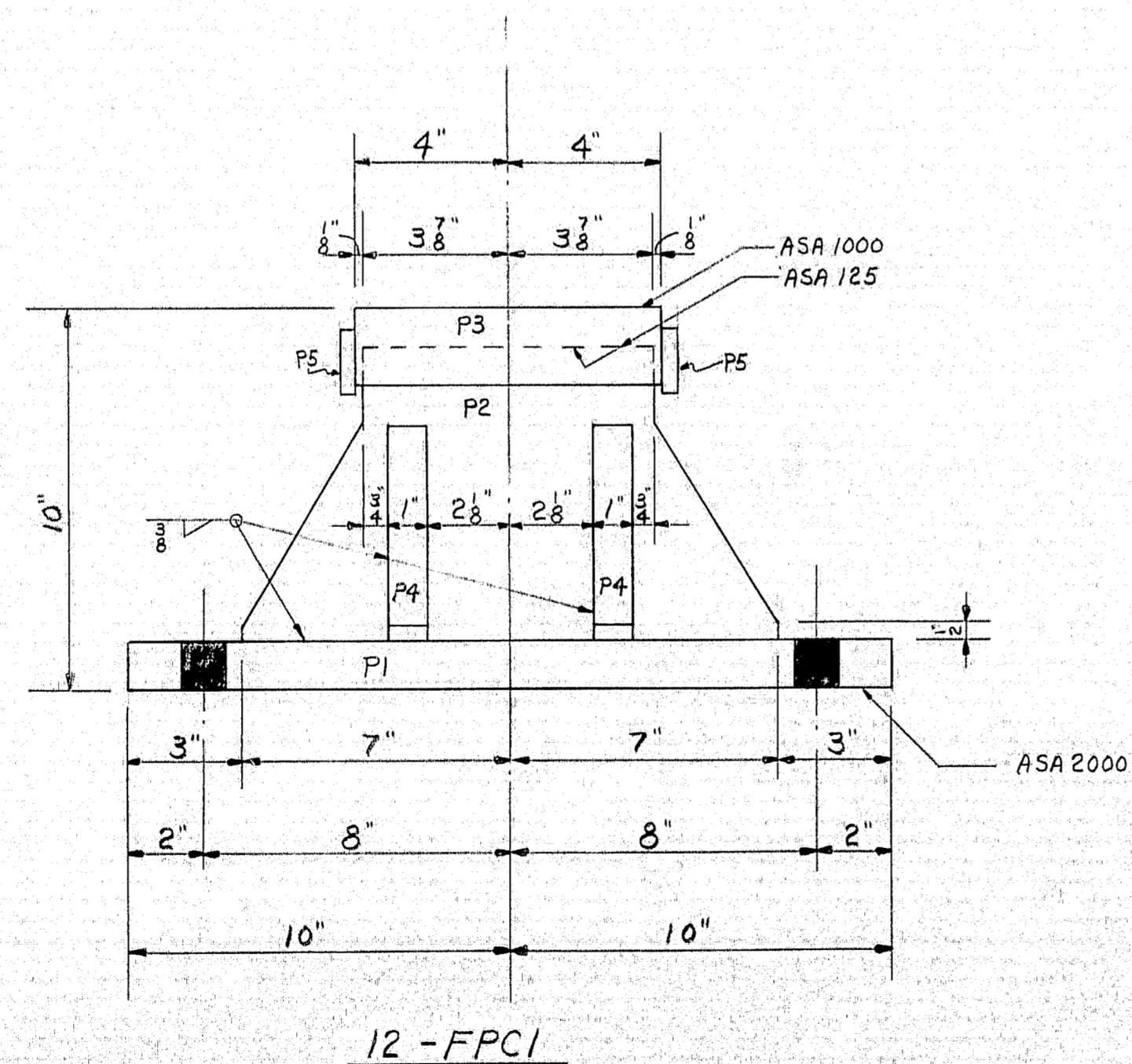
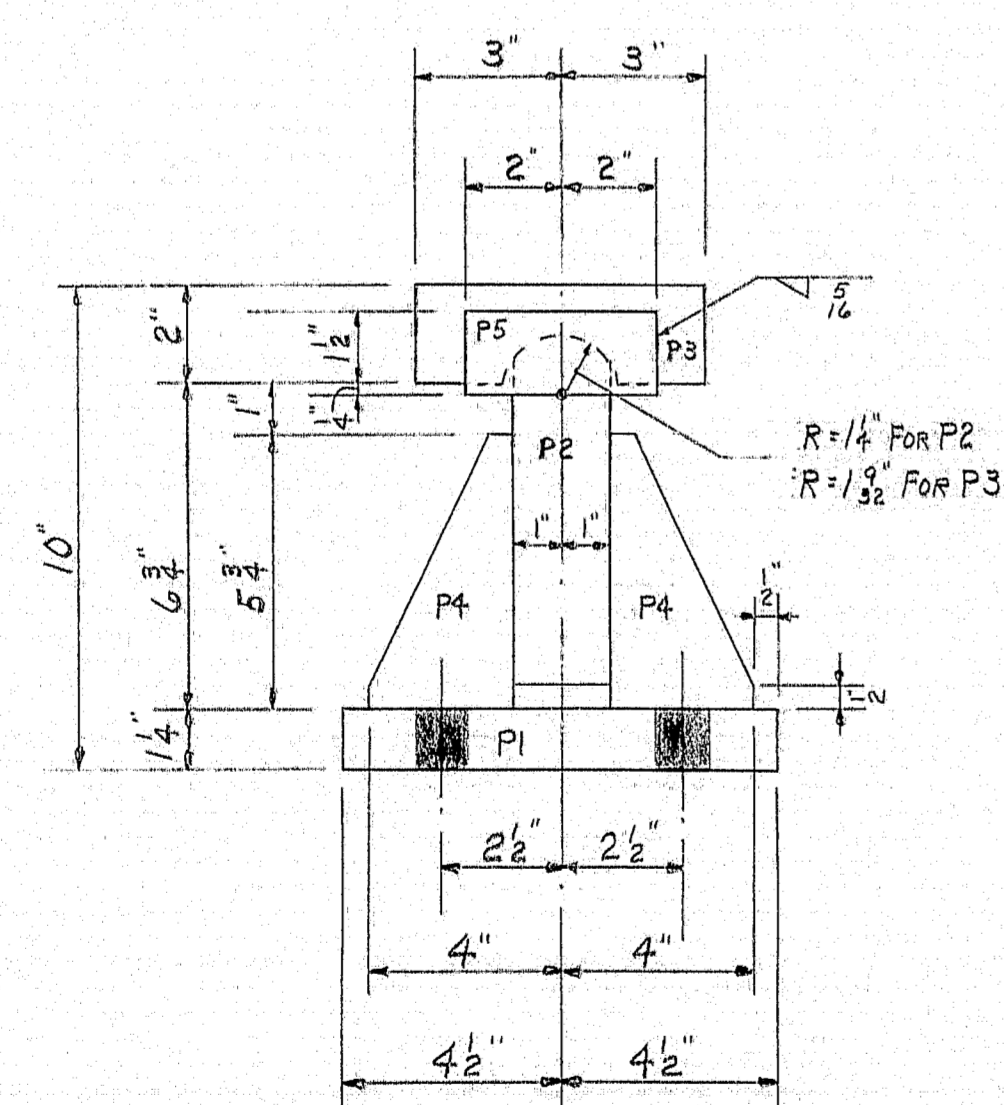
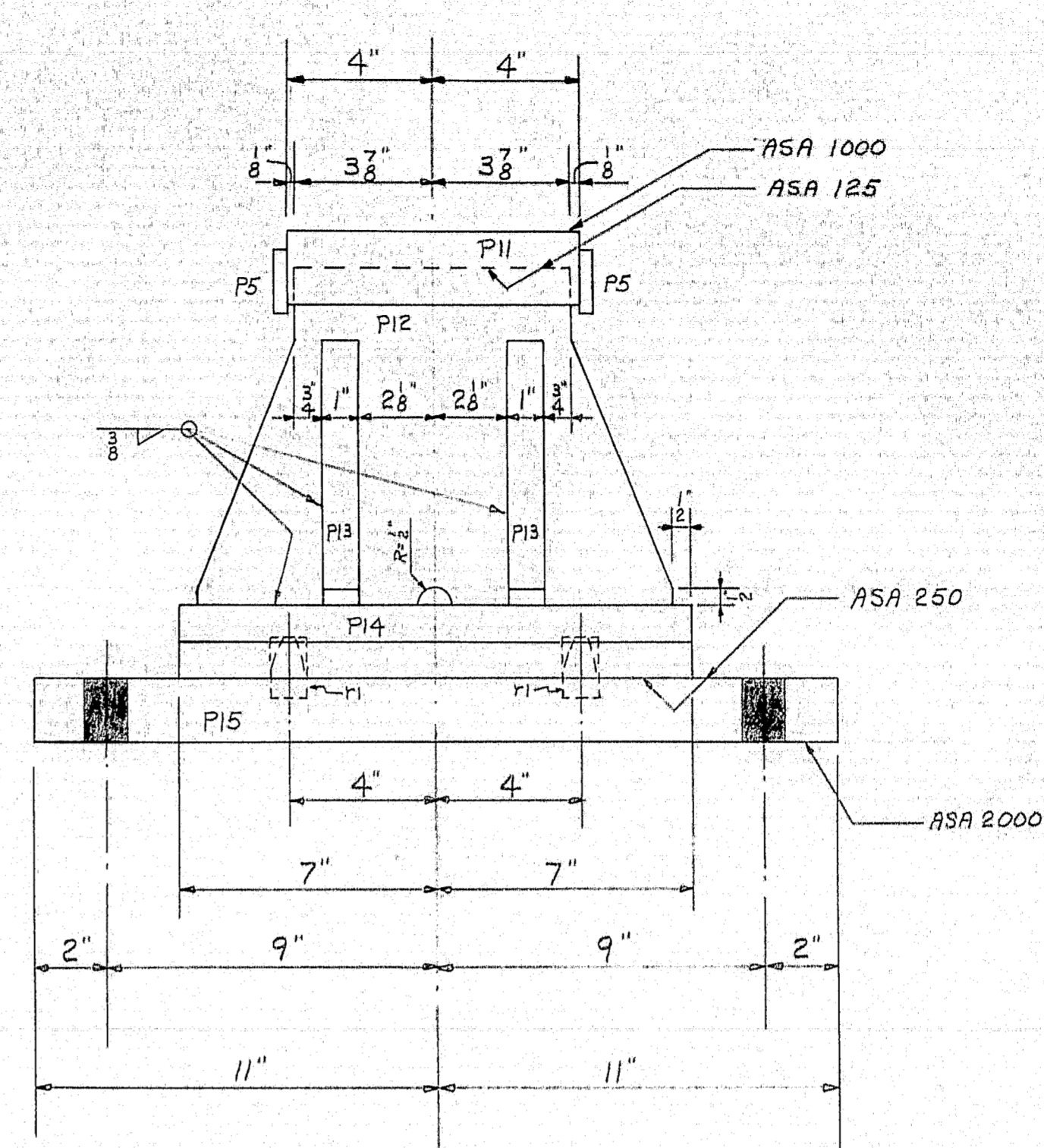
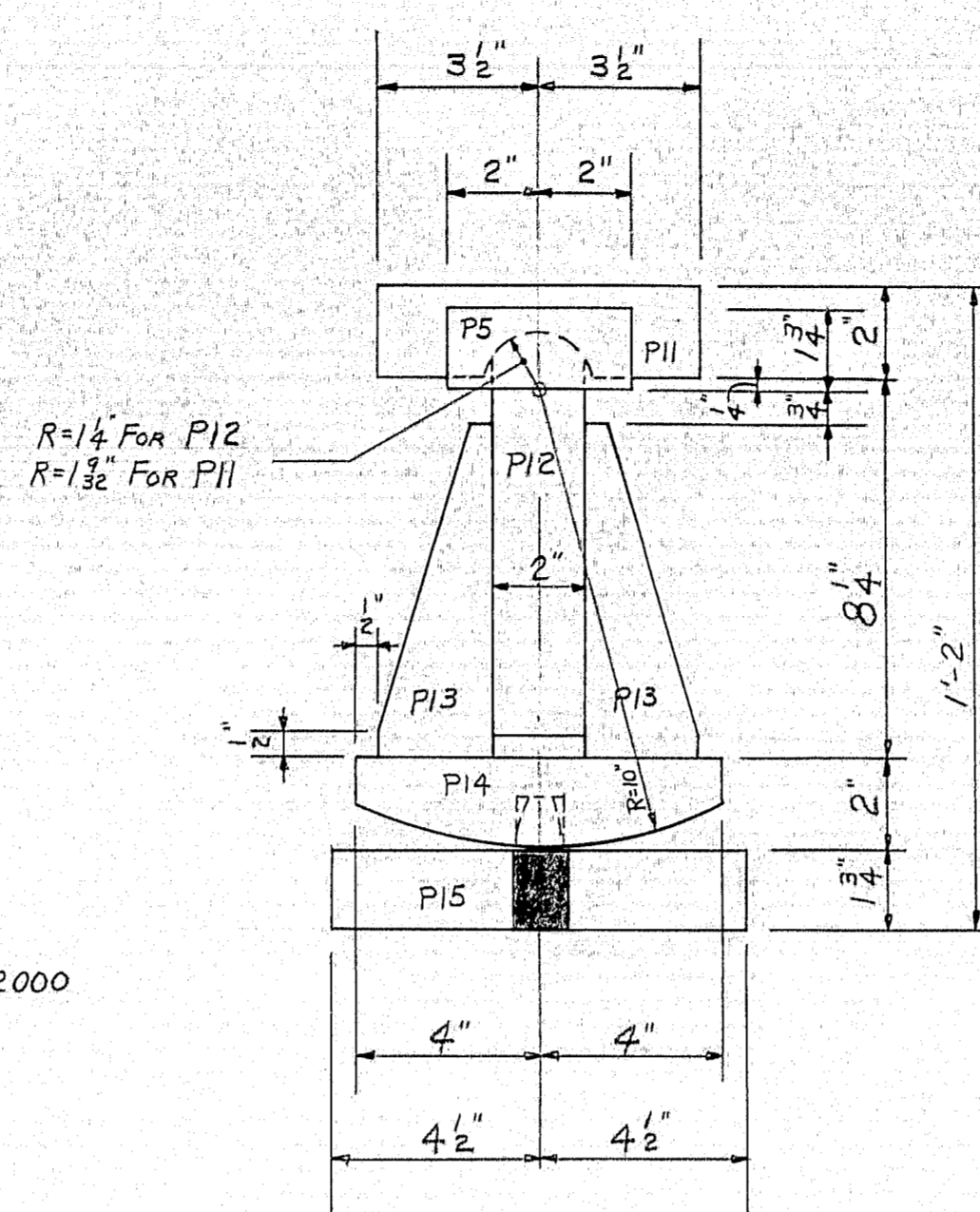
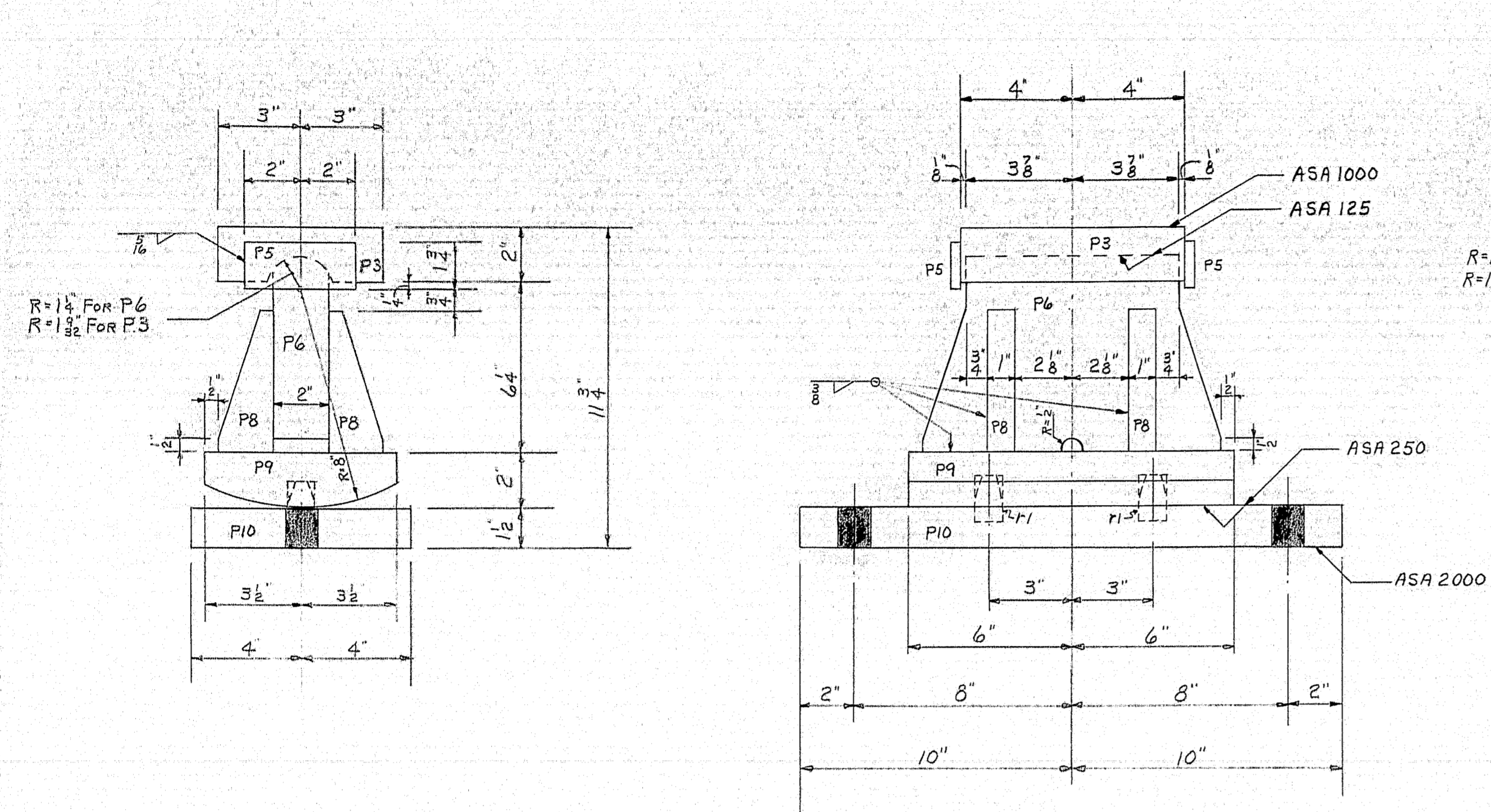
SHOP CONNECTIONS:
 FIELD CONNECTIONS:
 HOLES:
 PAINT:

DIAGRAM OF STRINGER ELEVATIONS.

PRINT ISSUE		Bancroft & Martin Rolling Mills Company Brewer, Maine
NO.	DATE	
2	S.H.C. 9-8-64	KIRKLAND ROAD BRIDGE OLD TOWN MAINE
3	CUST 9-8-64	
5	SHOP 9-8-64	
2	F.A. 7-29-64	CUSTOMER DESIGNER STATE HIGHWAY COMMISSION
DRAWN	7-20-64 D.C.	
REVISION		
REVISION		
ORDER		DWG. B64-189-E2

98-43

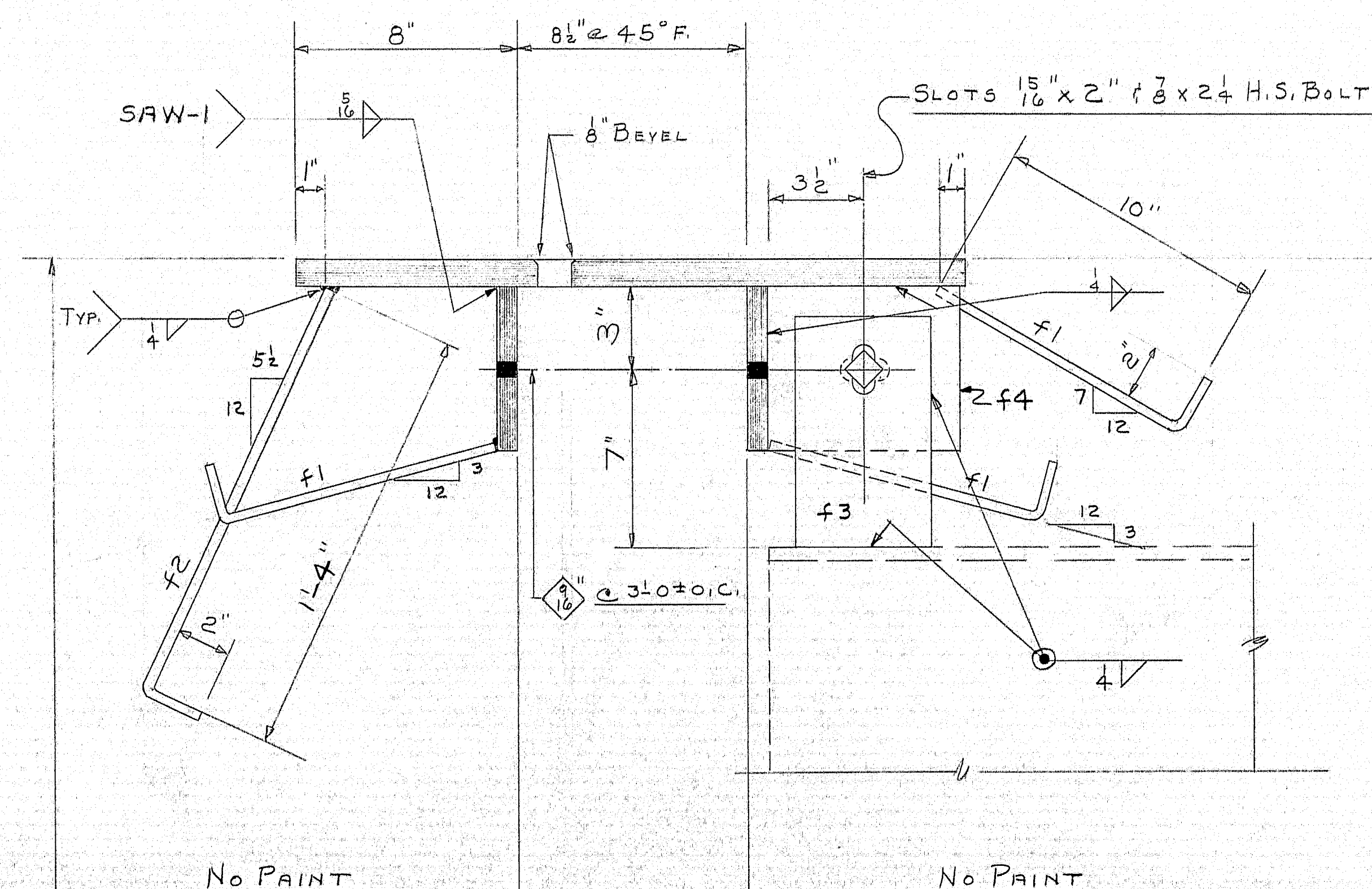
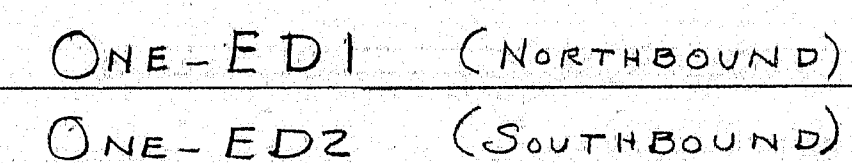




SHIP		BILL OF MATERIAL				DWG. B64-189-S1
MARK	NO.	MARK	SHAPE	LENGTH	WT.	REMARKS
EPC1	12		SHOP ASSEMBLY			
EPC2	12		Do			
EPC4	24		Do			
	12	P1	R 9 x 1 1/4	1	8	ASTM-A-36
	12	P2	R 7 1/2 x 2	1	2	
	24	P3	R 6 x 2	0	8	
	48	P4	R 3 x 1	0	5 3/4	
	96	P5	R 1 3/4 x 3/8	0	4	
	12	P6	R 7 1/4 x 2	0	11	
	48	P8	R 2 x 1	0	5 1/4	
	12	P9	R 7 x 2	1	0	
	12	P10	R 8 x 1 1/2	1	8	
	24	P11	R 7 x 2	0	8	
	24	P12	R 9 1/4 x 2	1	1	
	96	P13	R 2 1/2 x 1	0	7 1/4	
	24	P14	R 8 x 2	1	2	
	24	P15	R 9 x 1 3/4	1	10	
	72	P1	1" Ø Rod	0	12	
	12	P16	9 x 1/2	1	8	FABRICO
	24	P17	9 x 1/2	1	10	
	12	P18	8 x 1/2	1	8	
ABI	120		1" Ø Rod	1	3	SWEDGE ANCHOR
	240		1" HEX NUTS			
	120		1/2" WASHERS			

WELD W/E TO ELECTRODES.
SHOP CONNECTIONS: 1" TO 2" THICK - PREHEAT 50°F.
FIELD CONNECTIONS: DO
HOLES: 1 3/8" Ø
PAINT: STATE SPECS.

PRINT ISSUE			BEARING PEDESTALS	
2	S.H.C.	9-8-64	<i>Bancroft & Martin Inc.</i> <i>Brewer, Maine</i> INTER. #95 OVER KIRKLAND ROAD. OLD TOWN, MAINE	
3	CUST.	7-20-64		
4	P.O.R.T.	7-6-64		
2	S.H.C.	6-30-64		
DRAWN 6-29-64 C.J.M.			CUSTOMER <u>FEED & FEED</u>	
REVISION			DESIGNER <u>STATE HIGHWAY COMMISSION</u>	
REVISION			ORDER	
REVISION			DWG. <u>B64-189-51</u>	



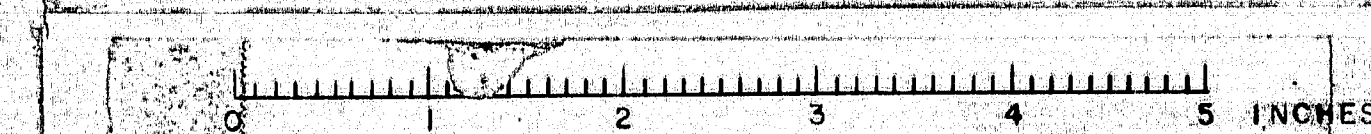
SECTION A-A FOR ED1
SECTION B-B FOR ED2

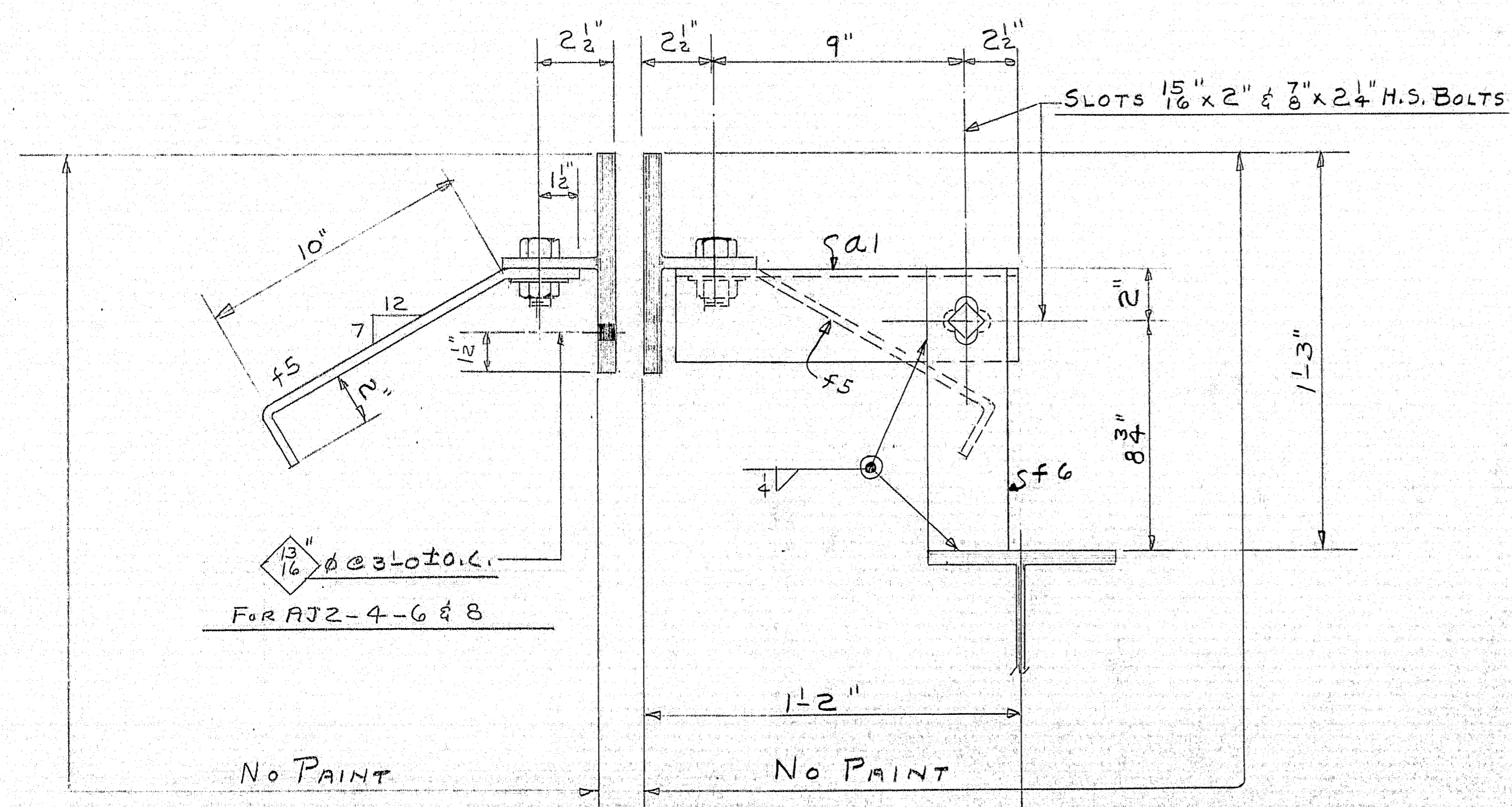
SHOP CONNECTIONS: WELD (E70-LOW HYDROGEN
ELECTRODES UNLESS NOTED)
FIELD CONNECTIONS:
HOLES: AS NOTED
PAINT: STATE OF ME. SPEC'S.

APP'D AS NOTED 7-14-64

EXPANSION DAMS

PRINT ISSUE			<i>Bancroft & Martin Inc.</i> <i>Brewer, Maine</i>	
2	S.H.C.	9-8-64	INTERSTATE 95 OVER KIRKLAND RD, OLD TOWN MAINE	
3	S.H.T.	7-20-64		
5	S.H.O.P	7-20-64		
2	F.A.	7-9-64		
DRAWN 7-6-64 D.C.			CUSTOMER <u>REED & REED</u>	
REVISION			DESIGNER <u>STATE HIGHWAY COMM.</u>	
REVISION				
REVISION			ORDER _____	DWG. <u>B64-189-52</u>

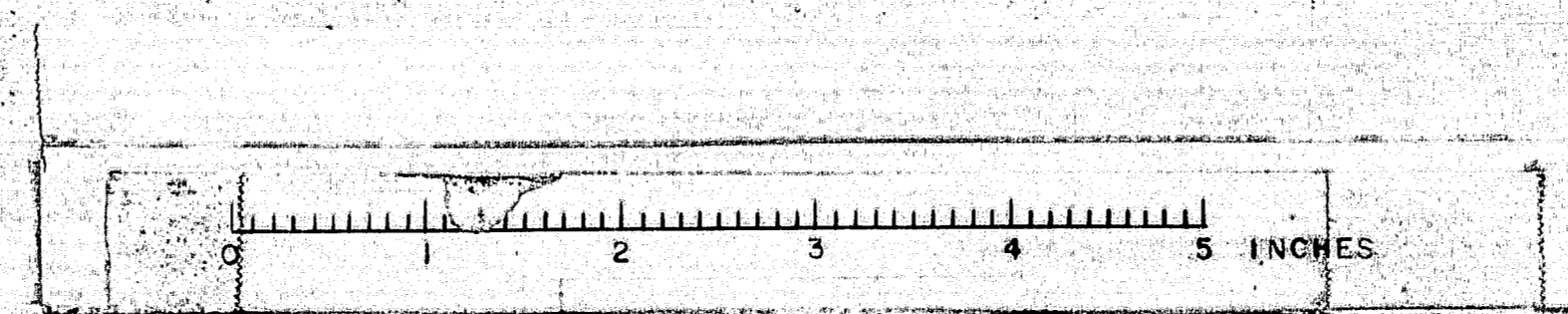


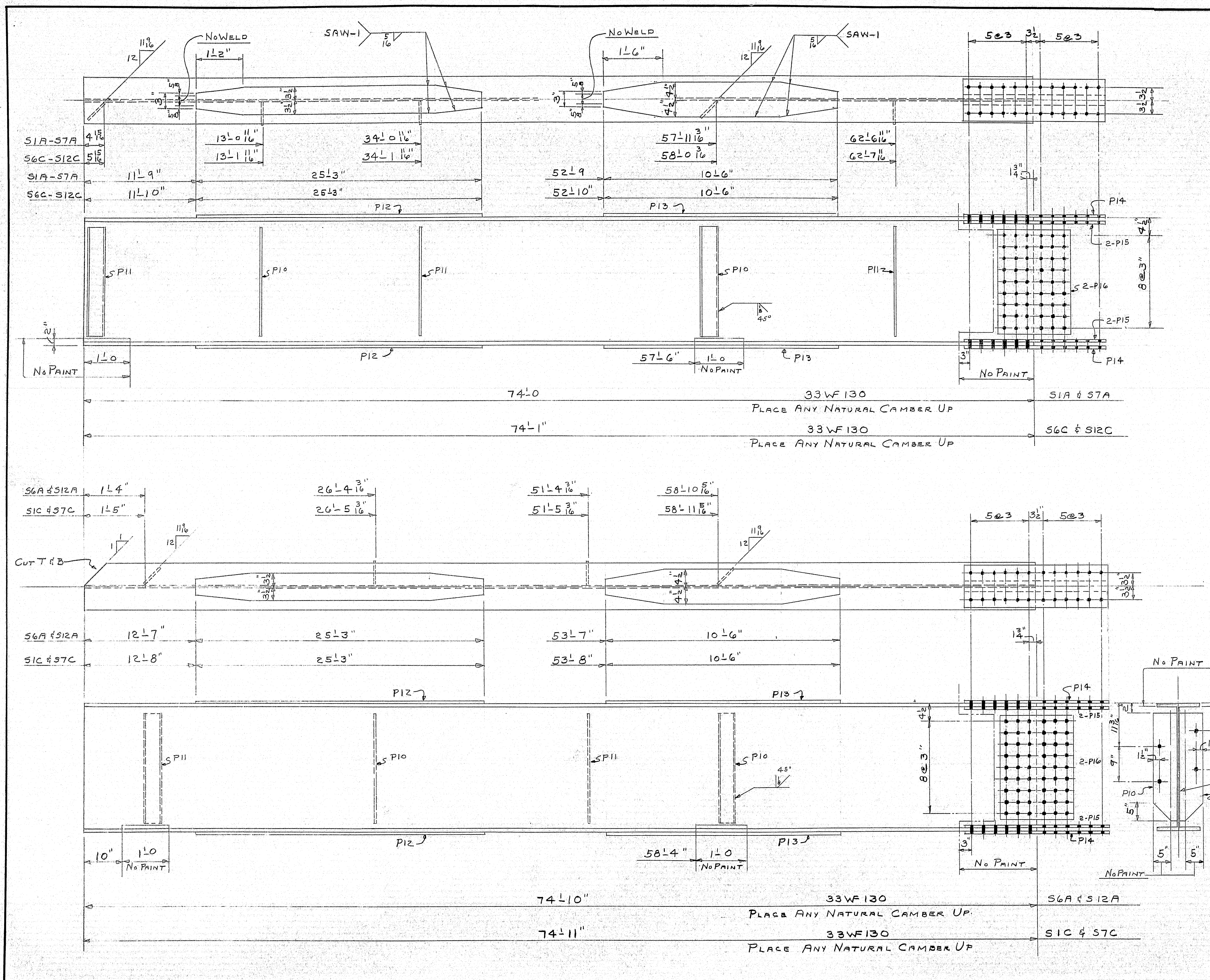


SHOP CONNECTIONS: 3 H.S. BOLTS
FIELD CONNECTIONS:
HOLES: 1 5/16" Ø UNLESS NOTED
PAINT: STATE OF ME. SPEC'S

App'd As Noted 7-14-64

ARMORED JOINTS			PRINT ISSUE	
2	S.H.C.	9-8-64	<i>Bancroft & Martin Inc.</i> <i>Brewer, Maine</i> <hr/> INTERSTATE 95 OVER KIRKLAND RD OLD TOWN MAINE <hr/> CUSTOMER <u>REED & REED</u> DESIGNER <u>STATE HIGHWAY COMM.</u> <hr/> ORDER _____ DWG. <u>364-189-53</u>	
5	CUST	7-20-64		
5	S.H.P	7-20-64		
2	F.A.	7-9-64		
DRAWN	7-8-64	D.C.		
REVISION				
REVISION				
REVISION				

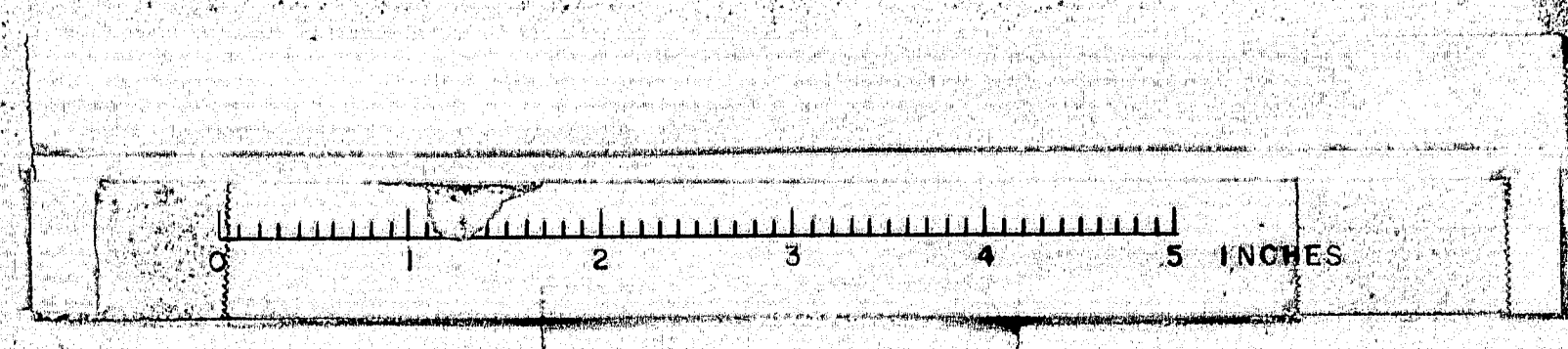


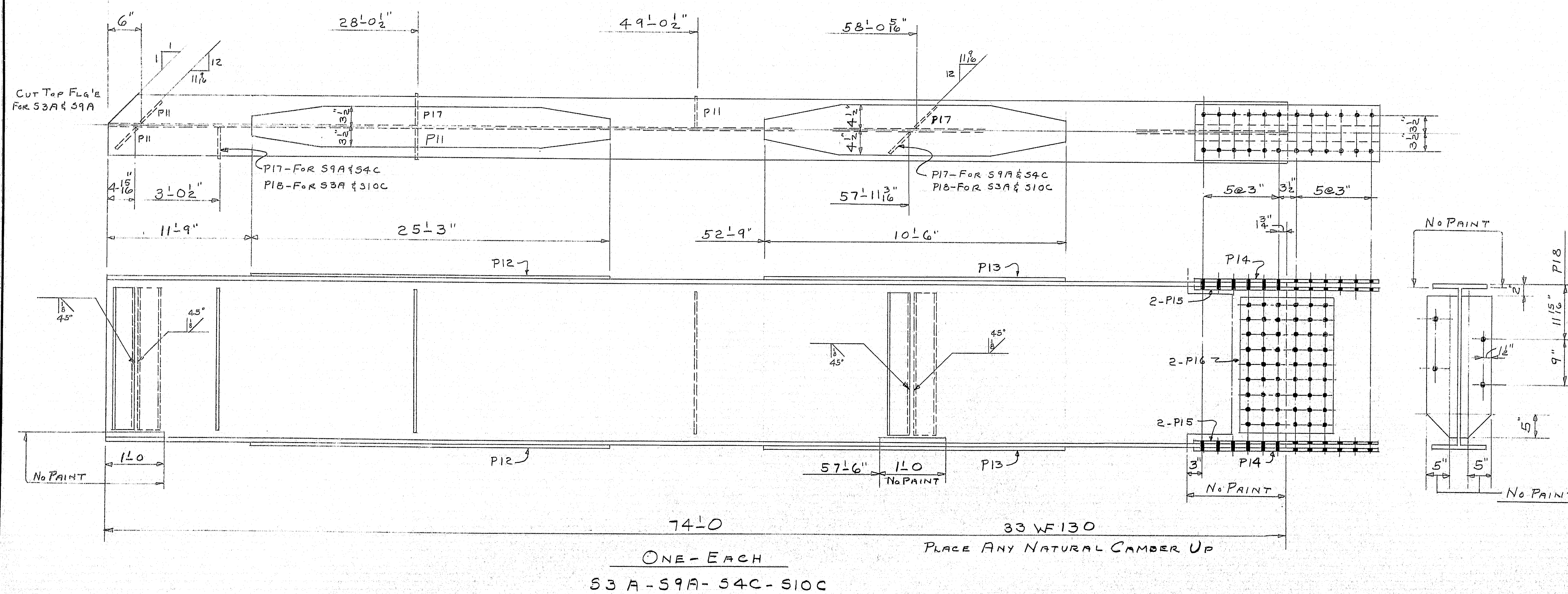
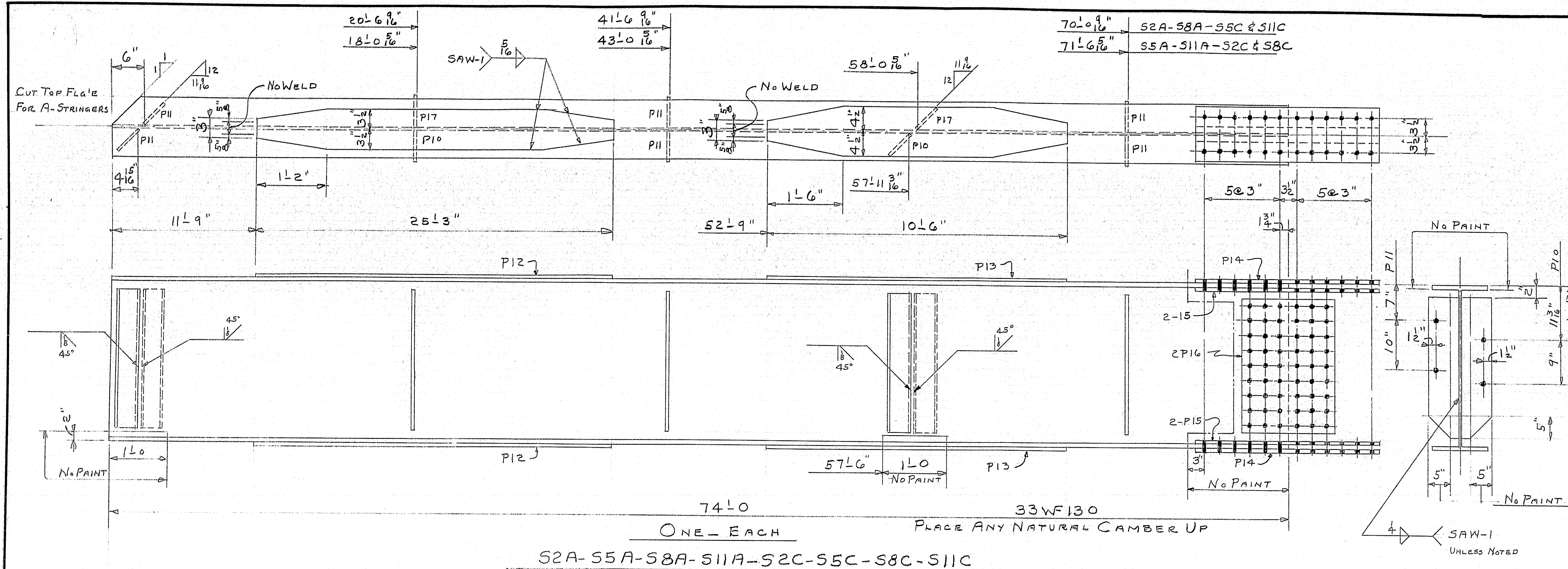


SHIP		BILL OF MATERIAL				DWG. B64-189-54	
MARK	NO.	MARK	SHAPE	LENGTH	WT.	REMARKS	
S1A	1		33WF130	74' 0"		ASTM-A36	
S7A	1		D.	74' 0"			
S6C	1		D.	74' 1"			
S12C	1		D.	74' 1"			
S6A	1		D.	74' 10"			
S12A	1		D.	74' 10"			
S1C	1		D.	74' 11"			
S7C	1		D.	74' 11"			
	20	P11	R6x3/8	2' 5"			
	16	P10	D.	2' 5"			
	16	P12	R7x1/2	25' 3"			
	16	P13	R9x1/2	10' 6"			
	16	P14	R11x1/2	3' 0 1/2"			
	32	P15	R4x3/4	3' 0 1/2"			
	16	P16	R18x2	2' 3"			
FIELD	1322		3/8 H.S. BOLTS	0' 3"		HEAVY HEAD	
D.	1174		D.	0' 3 1/2"		D.	
D.	2496		3/8 H.S. WASHERS				
D.	452		3/8 H.S. BOLT	0' 1 1/2"			

SHOP CONNECTIONS: WELD
 FIELD CONNECTIONS: 3/8 H.S. BOLTS
 HOLES: 1/8" Ø
 PAINT: STATE OF ME, SPEC'S.

PRINT ISSUE		Bancroft & Martin Inc. Brewer, Maine	
2	S.H.C.	9-8-64	
3	CUST	9-8-64	
5	SHOP	9-8-64	
2	F.I.A.	7-29-64	
DRAWN	7-25-64	D.C.	
REVISION			
REVISION			
REVISION			
ORDER			DWG. B64-189-54





SHOP CONNECTIONS: WELD
FIELD CONNECTIONS: 3/8 H.S. BOLTS
HOLES: 1 5/16" ϕ
PAINT: STATE OF ME. SPEC'S.

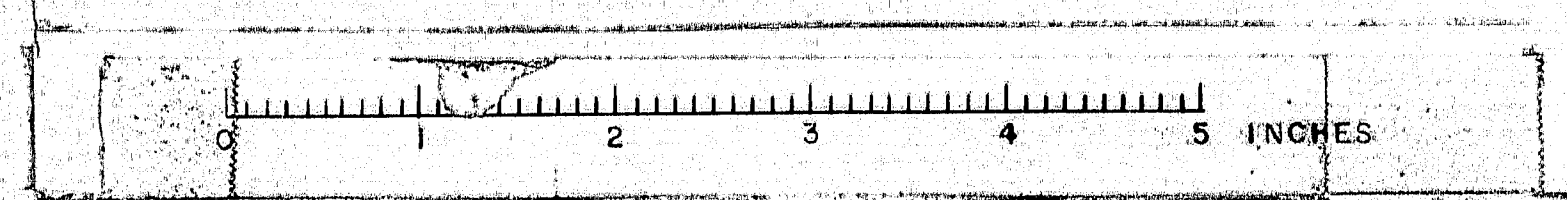
STRINGERS

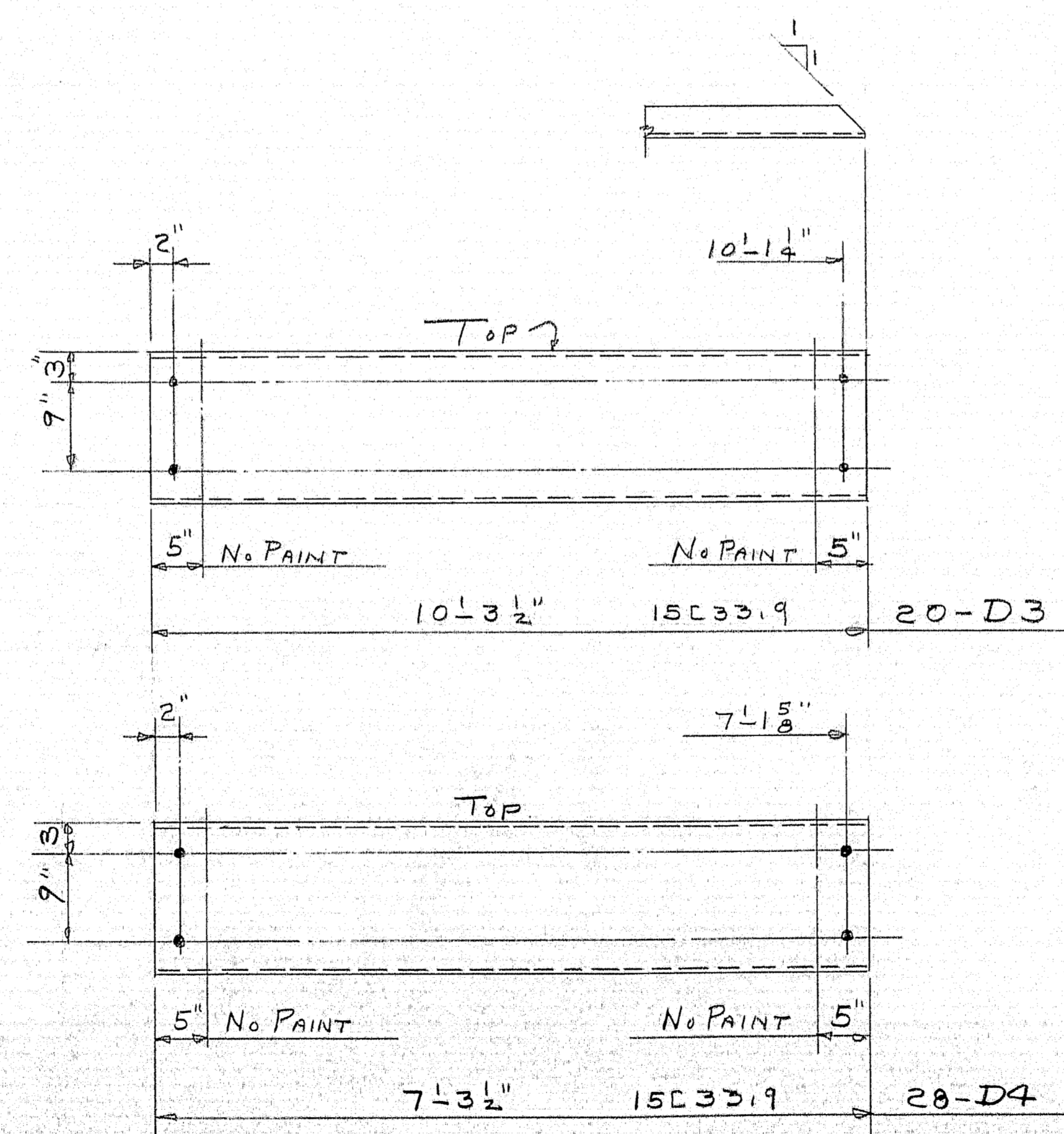
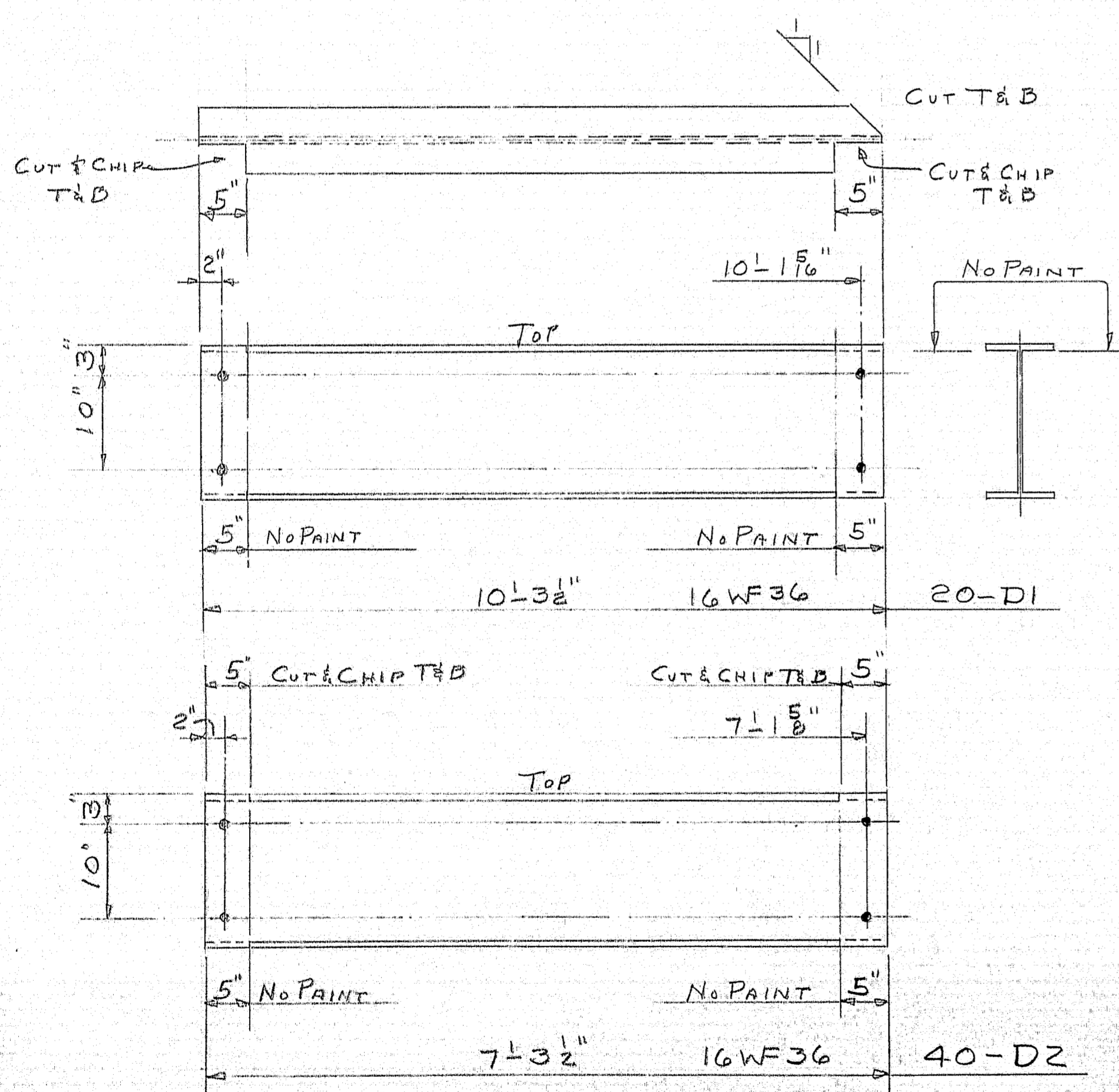
Bancroft & Martin Inc.
Brewer, Maine

INTERSTATE 95 OVER KIRKLAND RD.
OLD TOWN MAINE

CUSTOMER REED & REED
DESIGNER STATE HIGHWAY COMM.

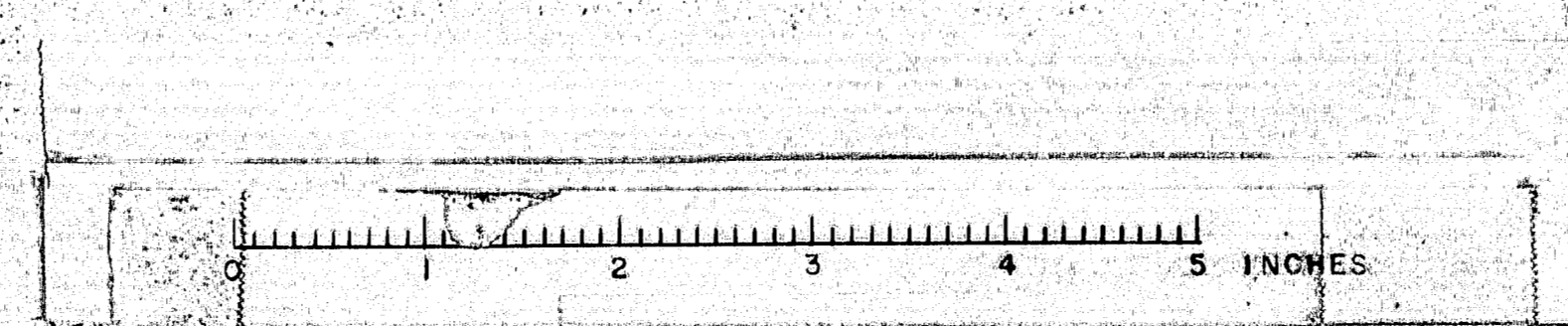
ORDER _____	DWG. <u>B64-189-55</u>
-------------	------------------------

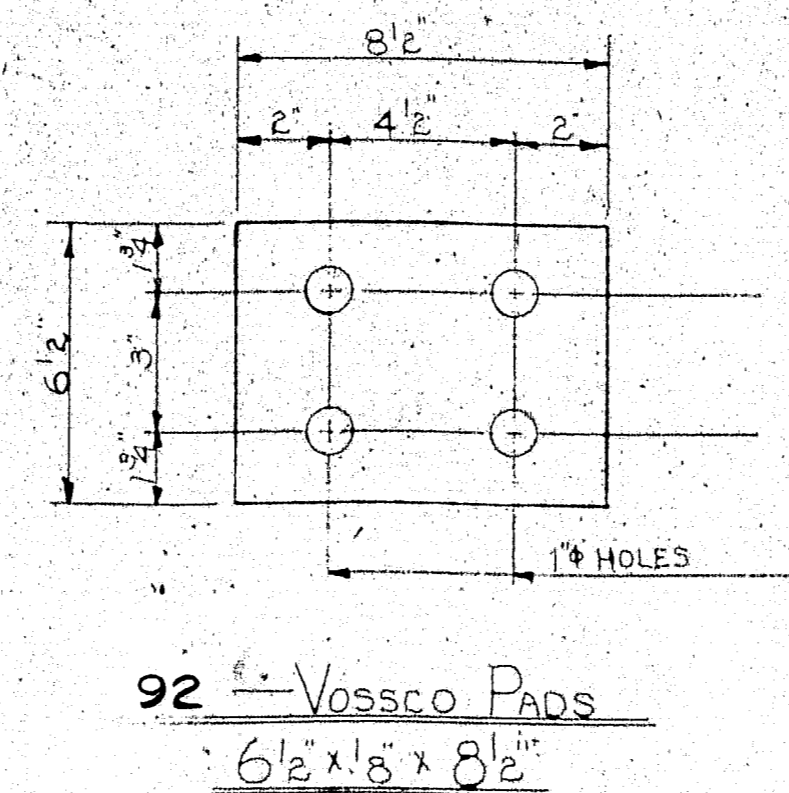
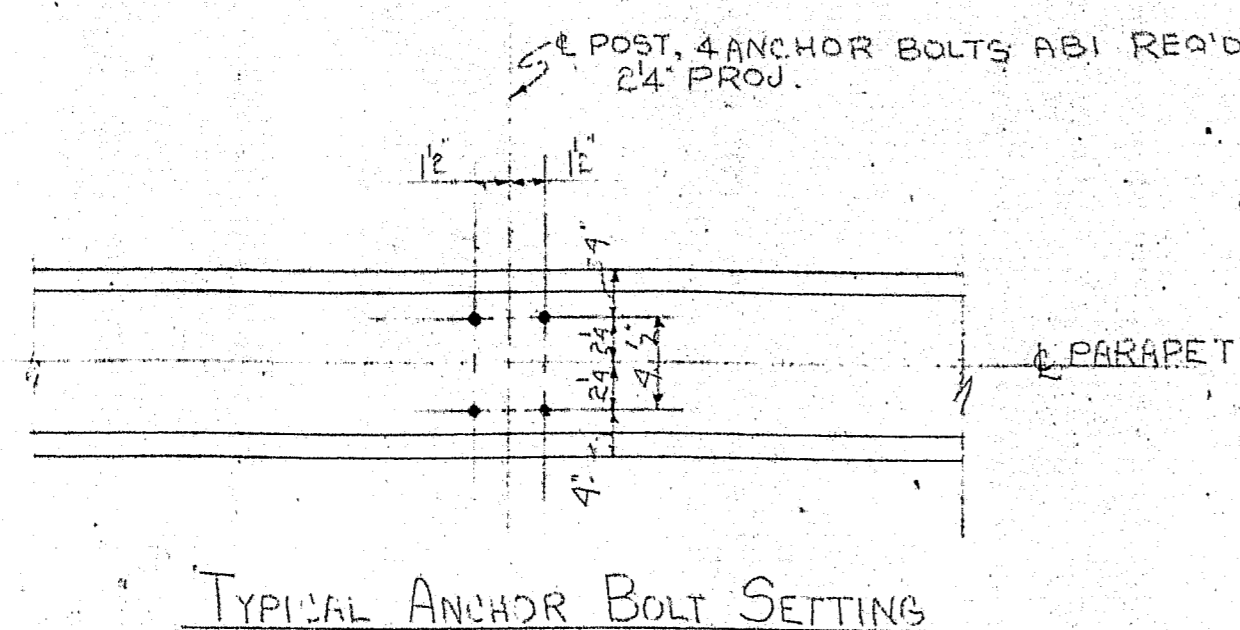




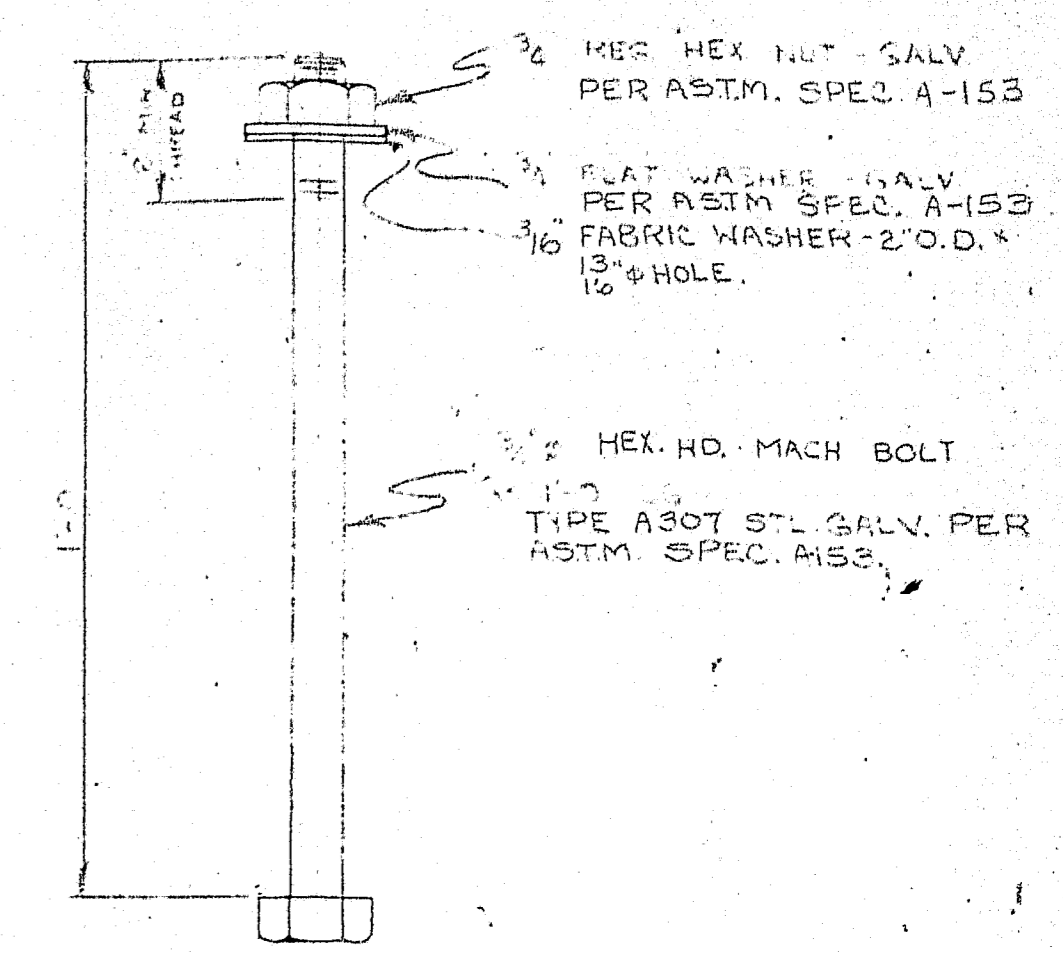
SHOP CONNECTIONS: WELD
FIELD CONNECTIONS: 3 H.S. BOLTS
HOLES: 1 5/8" Ø
PAINT: STATE OF ME, SPEC'S

STRINGERS & DIAPHRAGMS					
PRINT ISSUE		<i>Bancroft & Martin Inc.</i> <i>Brewer, Maine</i>			
2	S.H.C.	9-8-64.	INTERSTATE 95 OVER KIRKLAND R. OLD TOWN MAINE		
3	CUST.	9-8-64			
5	S.H.O.P	9-8-64			
2	F.A.	7-29-69			
DRAWN 7-28-64 D.C.		CUSTOMER <u>REED & REED</u>			
REVISION		DESIGNER <u>STATE HIGHWAY COMM.</u>			
REVISION		ORDER _____			
REVISION		DWG. <u>364-189-57</u>			





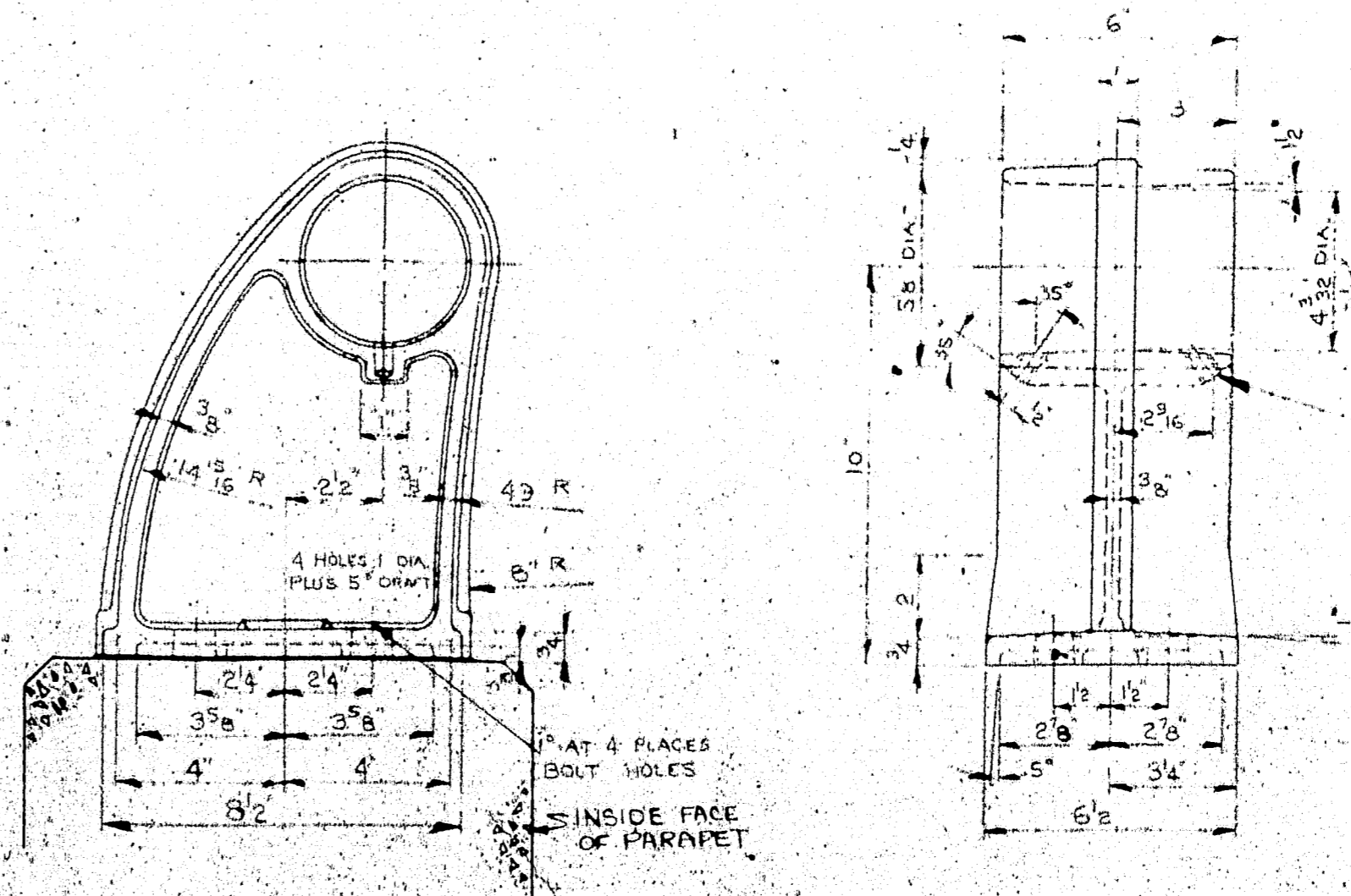
8 - 7172-4 END CAFE
1/4\"/>



336 - ANCHOR BOLTS-ABI

GENERAL NOTES:

1. RAILING POSTS SHALL BE ALUMINUM ALLOY PERMANENT MOLD CASTINGS (A356-T6) CONFORMING TO ASTM SPEC. B108, ALLOY 36708, CONDITION T6.
2. RAILING SHALL BE ALUMINUM ALLOY EXTRUDED TUBE (6061-T6) CONFORMING TO ASTM SPEC. B235 ALLOY 6061A, CONDITION T6.
3. RAILING SHALL BE CONTINUOUS FOR A MINIMUM OF TWO OR MORE PANEL LENGTHS, FOR TUBES TWO OR MORE PANELS LONG SET SCREWS TO BE TIGHT AT ONE INTERIOR POST AND TO BEAR AT ALL OTHER POSTS. WHERE TUBES ARE NOT CONTINUOUS THRU POSTS LEAVE A ONE INCH GAP AT CENTERLINE OF POST.
4. ALUMINUM RAIL POST CASTING SHALL BE FURNISHED WITH AN INTEGRALLY CAST TEST COUPON FOR TENSION TEST SPECIMEN.

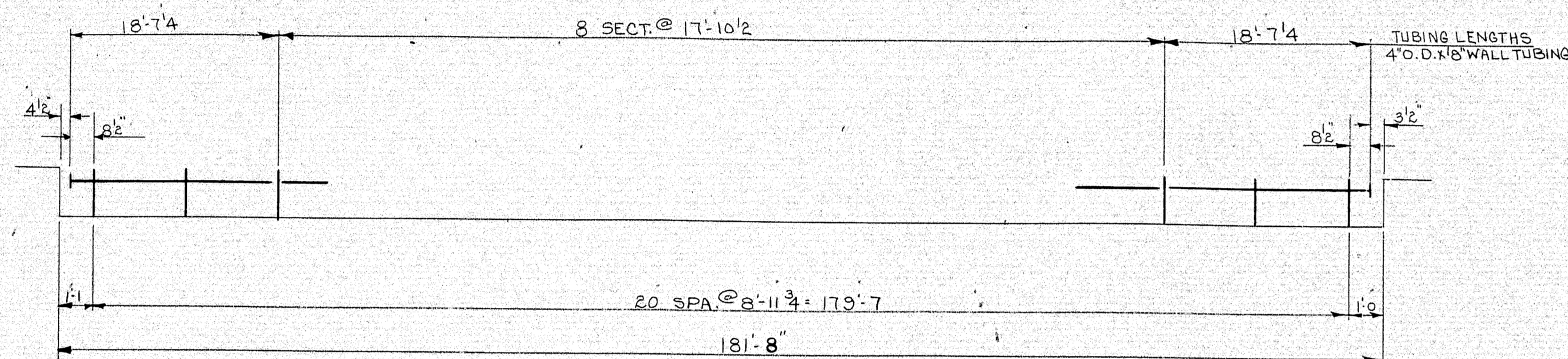


SUPPLIER TO FURNISH 2\"/>

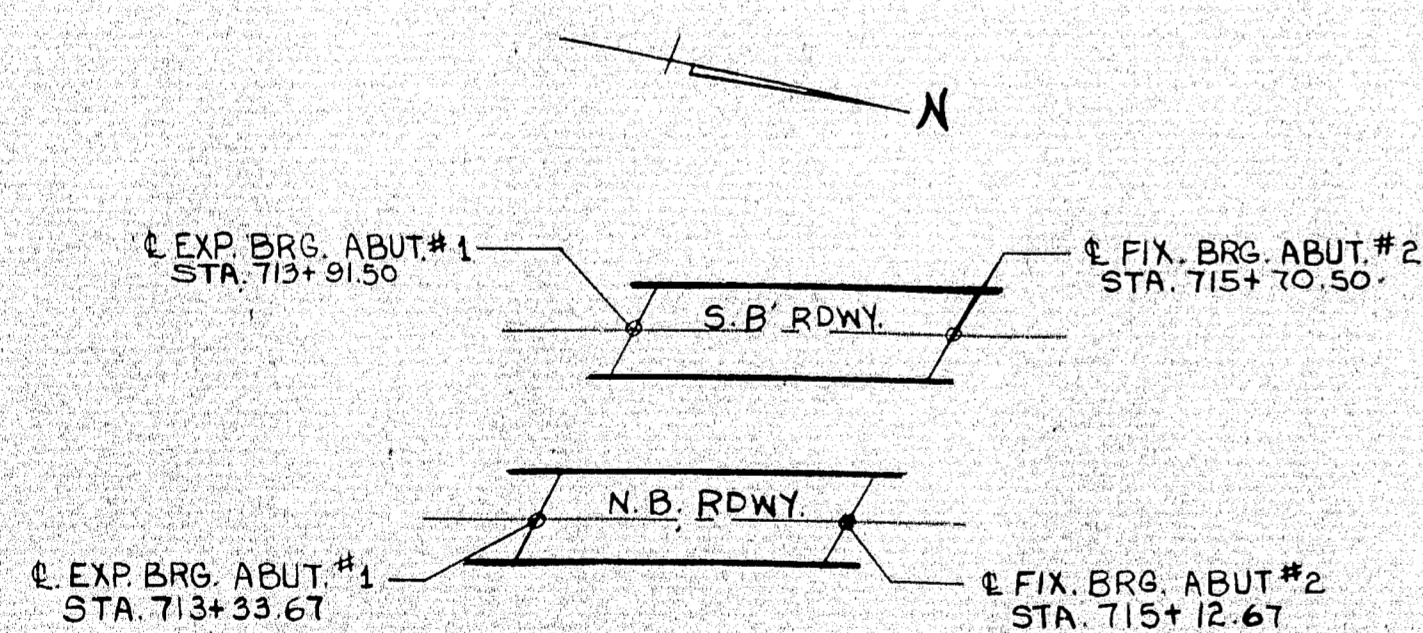
APPROVED:	
L. B. FOSTER CO.	
ATLANTA - CHICAGO - HOUSTON - LOS ANGELES - NEW YORK - PITTSBURGH	
FOR: REED & REED	
MAINE STATE HIGHWAY COMMISSION	
PENOBSCOT COUNTY, PROJ. I-95-8(5) 108	
ALUMINUM PARAPET RAILING	
GENERAL NOTES & TYPICAL DETAILS	
MADE: JWR	DATE: 7-21-64
CHECK: ELT	DATE: 8-3-64
JOB NO. AL-2426	
DRAWING: LB-3	
CUSTOMER'S NO.	

84 - FOSTER FF-108 POSTS
1/4\"/>

113: 87



INSIDE ELEV. WEST PARAPET N.B. & S.B. RDWY.
 OUTSIDE ELEV. EAST PARAPET N.B. & S.B. RDWY.
 INTERSTATE 95 OVER KIRKLAND ROAD



NOTE:

FOR GENERAL NOTES & TYPICAL DETAILS SEE DWG LB 3
 THIS DRAWING IS NOT TO SCALE.
 LENGTH OF RAILING ON THIS SHEET = 724' PAY LENGTH.
 SPLICE GAP & POST = 1'

113.88

BILL OF MATERIAL

MARK NO.	PC. NO.	NO. REQD.	DESCRIPTION	LENGTH FT.	IN.	REMARKS
			FOR SPECS SEE DWG. LB 3			
		84	FOSTER FF-108 POSTS			W/TEST COUPON
			W/SET SCREWS			
		92	VOSSCO PADS 6 1/2" X 18" X 8 1/2"			
		8	END CAPS 7172-4 W/SET SCREW			
AB1			336 -ANCHOR BOLTS			
		336	3/4" HEX. HD. MACH. BOLT-GALV.	1	0	
		336	3/4" REG. HEX. NUTS -GALV.			
		336	3/4" FLAT WASHERS - GALV.			
		336	3/4" FIBER WASHERS			
			1/2" FABRIC			
		8	4" O.D. X 1/8" WALL ALUM. TUBING	18	7 1/4	
		32	"DO"	17	10 1/2	

THIS CONTRACT IS BASED UPON THE CONTRACTOR'S LITIGATION AND BRACING THE ANCHOR BOLTS TO THE STRUCTURE'S DESIGN OR THE CONTRACTOR'S OWN DESIGN. THE L. B. FOSTER CO. WILL BE RESPONSIBLE TO THE CLIENT FOR ANY DESIGNER'S BY ANY OTHER LITIGATION AND BRACING.

APPROVED: _____

L. B. FOSTER CO.
 ATLANTA - CHICAGO - HOUSTON - LOS ANGELES - NEW YORK - PITTSBURGH

FOR: REED & REED
 MAINE STATE HIGHWAY COMMISSION
 PENOBSCOT COUNTY PROJ. # I-95-B(45) 188
 ALUMINUM PARAPET RAILING FOR
 INTERSTATE 95 OVER KIRKLAND ROAD

MADE UMR DATE 9-11-64 JOB NO. AL 24264 ORDER NO. NO6856
 CHECK ELT DATE 10-30-64 DRAWING LB 4 CUSTOMER'S NO. _____

INSPECTION BY: _____ REVISIONS: _____